

# Disaster Relief chief details early response to Hurricane Ida

*By Hubert Yates*  
*Correspondent*

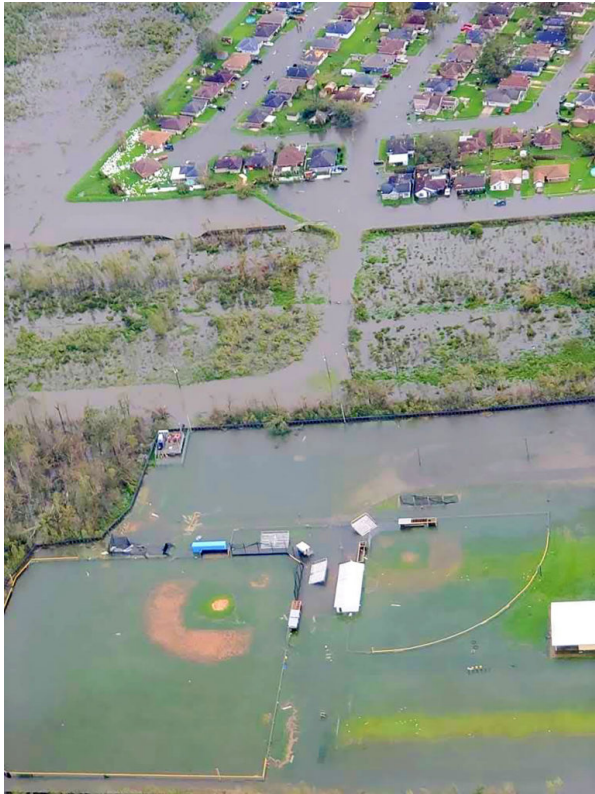


Yates

Jackson, Miss. (Special) – As a way of providing an update on the Hurricane Ida situation, may I say that we have seen the Grace of God! Give Him Glory! Grace is the unmerited favor of God. Surely that is a description of what we have experienced in these times as we survey the damage to our neighbors to the south in Louisiana and our own state's experience.

At this time, Mississippi Baptist Disaster Relief (MBDR) does not believe that we will have a significant in-state need to respond. Although the storm is still working its way through the state, MBDR believes that the damage is significantly below what was expected.

We have surveyed our Mississippi Gulf Coast and southwest Mississippi counties and find that there is no significant wind damage that requires chainsaw teams beyond the capabilities of our local/state MBDR teams. Our feeding needs have been evaluated and both American Red Cross and Salvation Army have rescinded/cancelled their requests for in-state support.



SWAMPED – Hurricane Ida floodwaters cover the baseball field of the East St. John High School Wildcats and Belle Pointe subdivision in Reserve, La. (Photo credit: Office of Congressman Garrett Graves)

In addition, we have determined that our only need for additional concern may be in flood cleanup, but that will take a few days to materialize and evaluate. Thank you to all who have made themselves available in the recent days. Your willingness to serve is an encouragement.

That said, we have a new request for assistance for our MBDR Kitchen One to deploy to the heart of New Orleans to support mobile feedings of 10,000-12,000 meals per day to the citizens of New Orleans. This will be a hardship deployment in that we will not have air conditioning, electricity (other than generator power), and will be working off potable water. Portable toilets and shower trailers will be provided.

In order to staff and maintain the kitchen, we will need a team of 30-40 volunteers for seven to 10 day rotations. This deployment could extend to four to six weeks. MBDR needs MBDR-credentialed feeding volunteers and one to two MBDR-

credentialed chaplains/feeding per deployment.

This will be the largest feeding deployment that we have made in the past several years. Team leadership will be provided by MBDR Task Force members. If you are a credentialed MBDR feeding volunteer, you are needed. Contact [dvail@mbcb.org](mailto:dvail@mbcb.org) with your name and dates of availability.

If you are a member of a congregation affiliated with the Mississippi Baptist Convention and are interested in becoming a part of our disaster relief ministry, use the same e-mail address and we will connect you with training opportunities.

In the days that are ahead, we will begin to schedule assessment, chainsaw/debris removal, tarping (placing tarpaulins over damaged roofs), and flood recovery teams to assist our brothers and sisters of Louisiana Baptist Disaster Relief in the monumental task before them.

Please pray for our MBDR volunteers as they prepare to respond [by] asking for traveling graces, provision of needs, and opportunities of witness and service.

If you feel lead to give toward the Mississippi Baptist Disaster Relief efforts, you may do so online at [www.mbc.org/giving](http://www.mbc.org/giving), selecting "Give as an Individual" and then designating your gift to Disaster Relief.

Check donations are also accepted. Simply make the check payable to the Mississippi Baptist Convention Board, designate Disaster Relief on the memo line, and mail to MBCB, P.O. Box 530, Jackson, MS 39205-0530.

All financial donations given through MBDR go directly to support relief/recovery efforts in partnership with local Mississippi Baptist churches and associations in affected areas.

*Yates is director of the Disaster Relief Department at the*

*Mississippi Baptist Convention Board. He may be contacted at  
hyates@mbcb.org. Telephone: (601) 292-3334.*